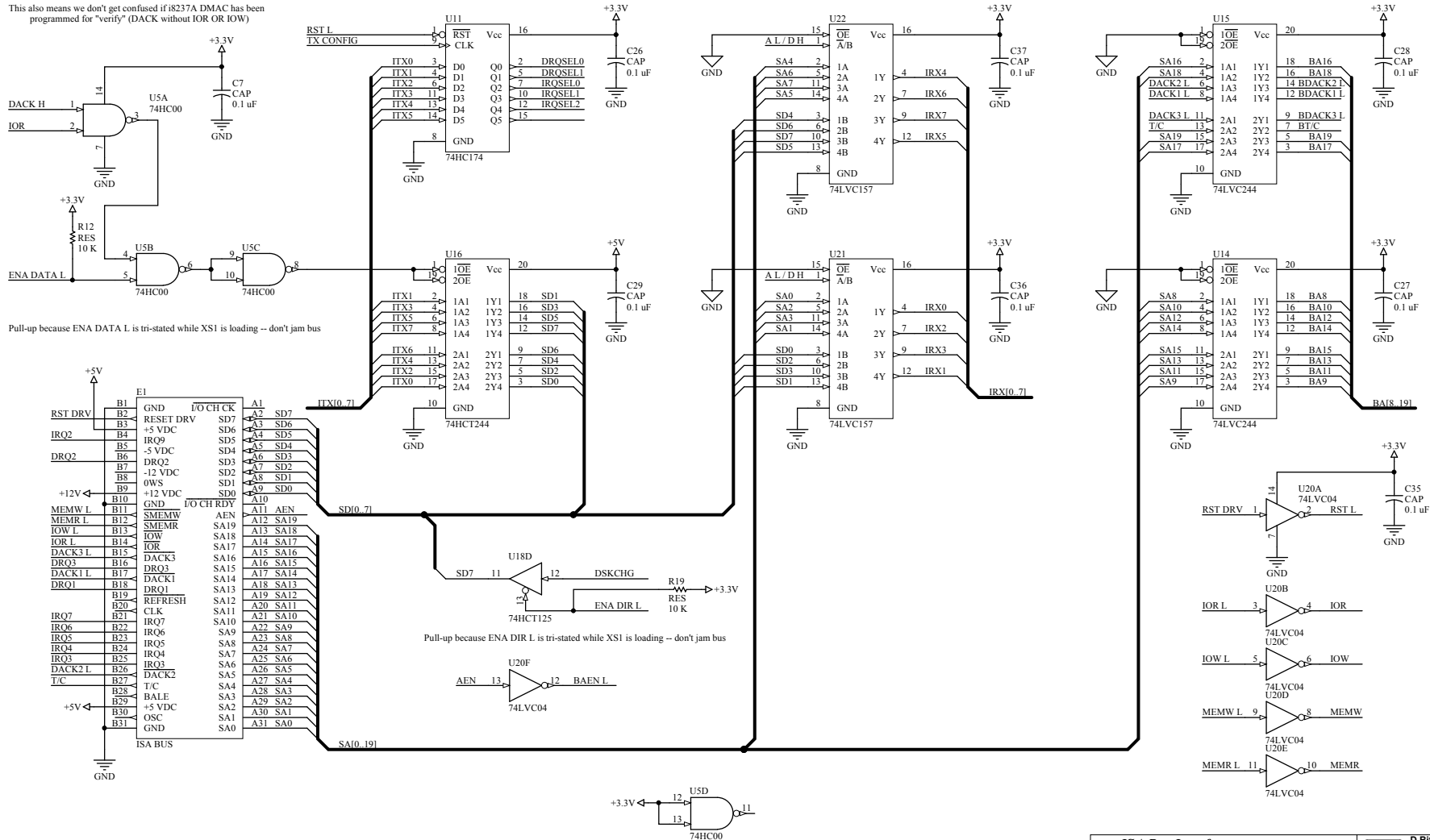


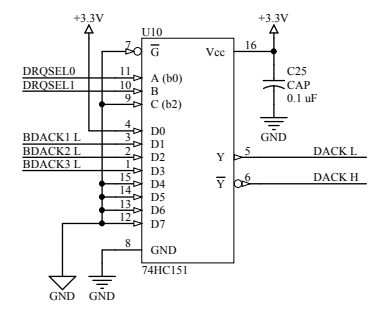
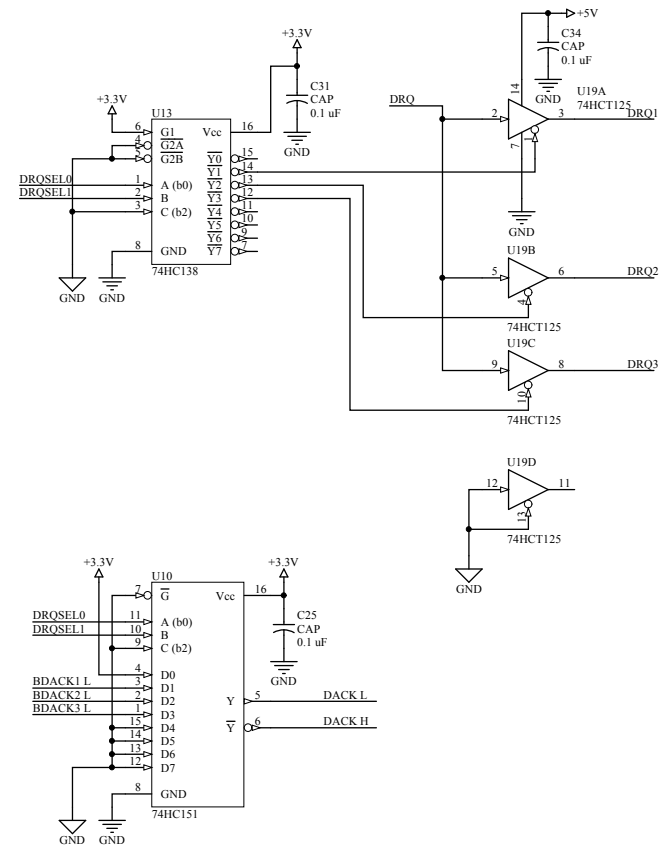
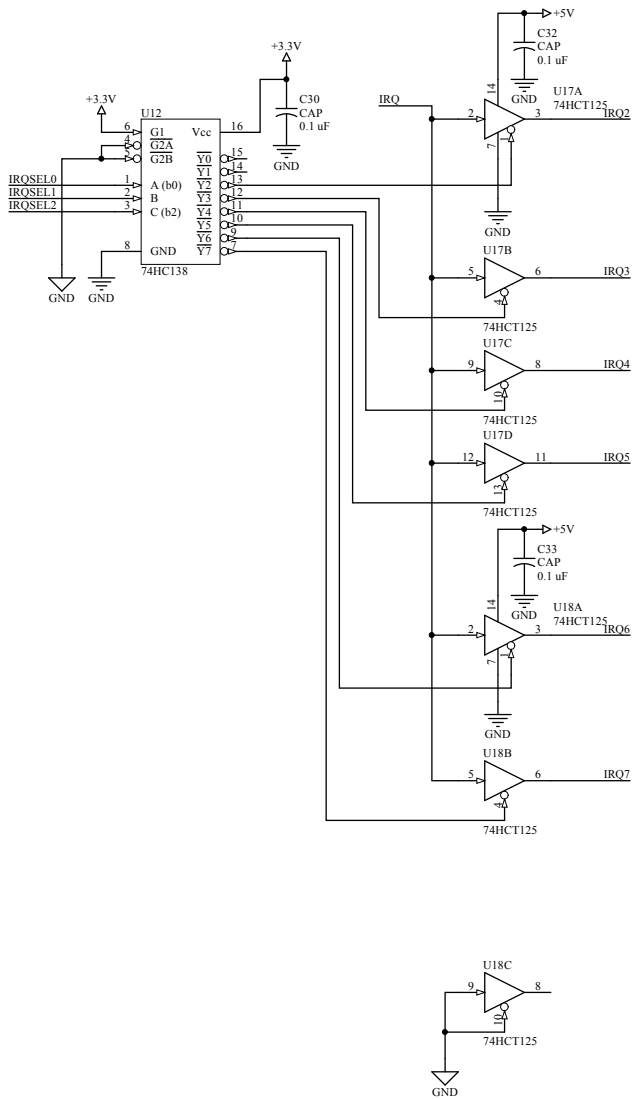
Title SA800 (etc.) Bus Interface		
Size: B	Number:	Revision: A
Date: 8/18/2012	Time: 12:30:42 AM	Sheet 1 of 1
File: C:\Users\John Wilson\Documents\CAD\XISA\FLOP\SA800 SchDoc		

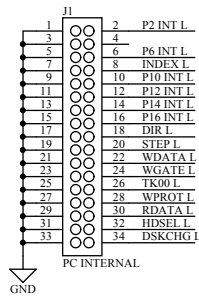


Driver is auto-enabled by HW during DACK
(Otherwise SW must wait for MEMW/IOR skew to settle)

This also means we don't get confused if i8237A DMAC has been programmed for "verify" (DACK without IOR OR IOW)







PC SA450 RX50

HD/360RPM TG43

DRATE SEL D
(ORed with sector pulses)

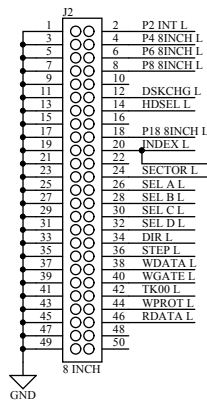
MTR A SEL A SEL A

SEL B SEL B SEL B

SEL A SEL C SEL B

MTR B MOTOR MOTOR

DSKCHG RDY/CHG



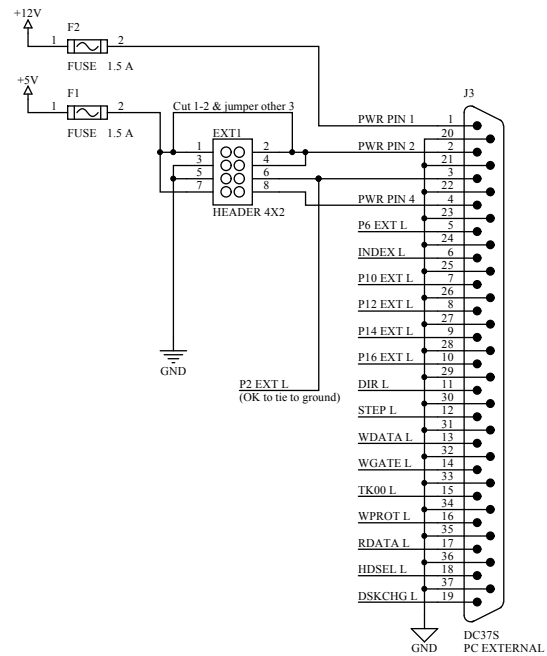
TG43

HD LOAD

Pins 1-4 of external connector

Default: 1 = +12, 2 = +5, 3 = high density, 4 = N/C
EXT1-4 not populated

Alternative: 1 = +12, 2 = GND, 3 = GND, 4 = +5
Cut trace on EXT1 and jumper EXT2-4



ISA bracket:

Keystone 9200-5
Muco A-017 / A-09-013
Gompf 9046-0008 (has ears)