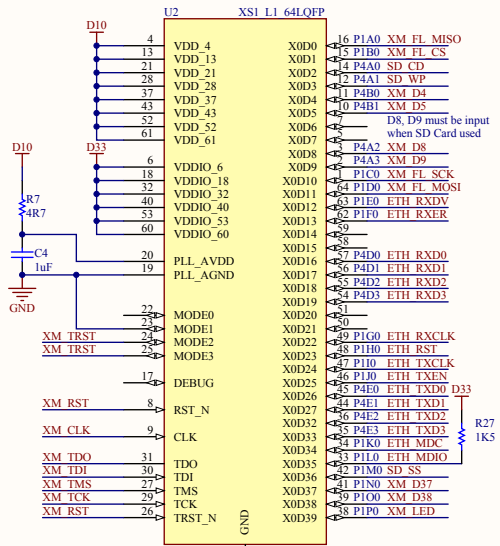
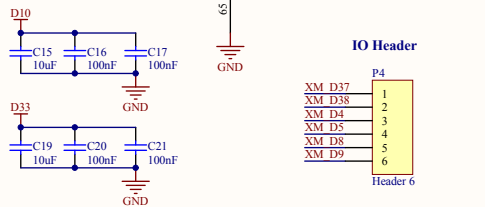


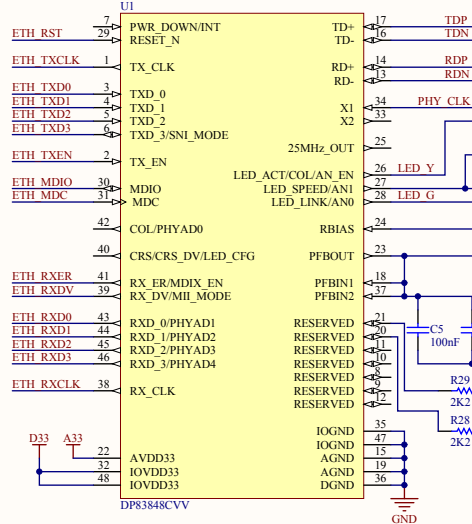
XMOS XSI-L1 Microprocessor



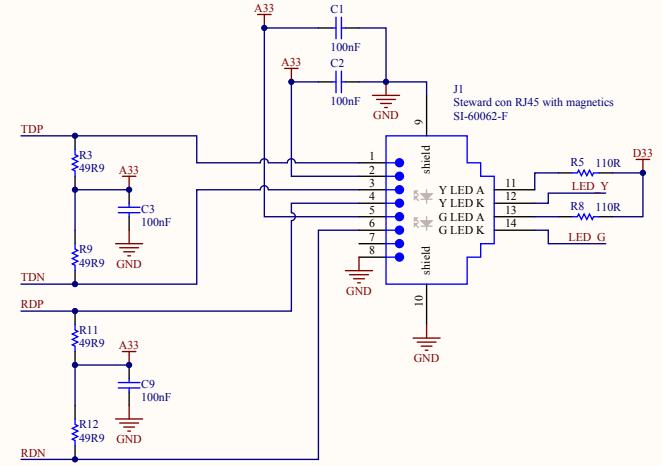
IO Header



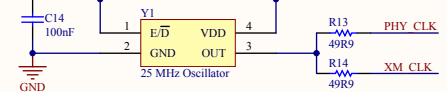
Ethernet PHY



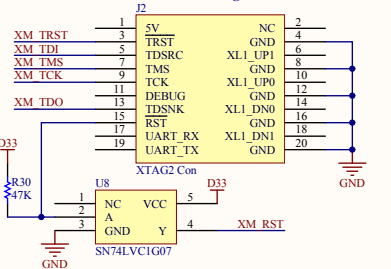
Ethernet Jack With Magnetics



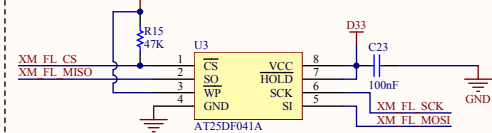
Oscillator



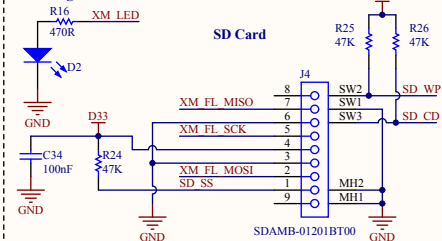
XTAG2 Debug Header



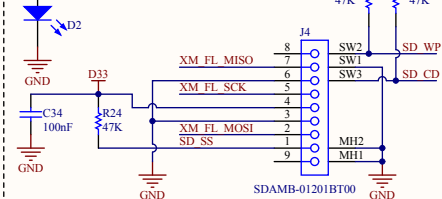
Boot Flash



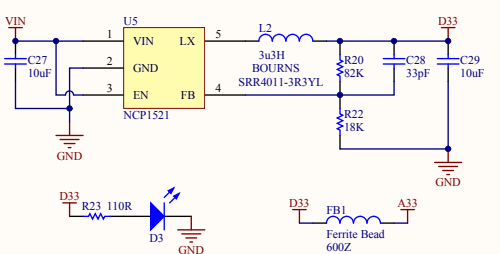
Programmable LED



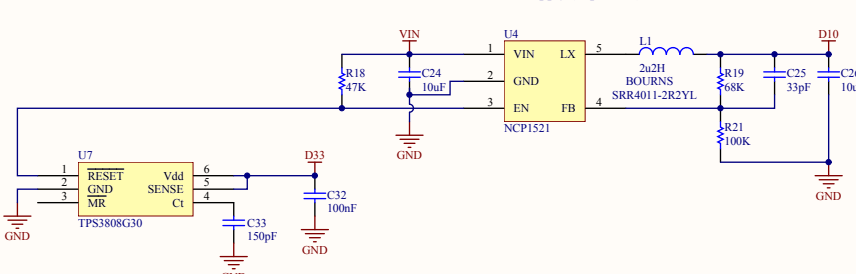
SD Card



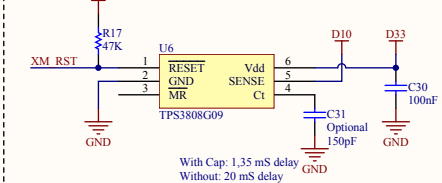
3.3V Power Supply



1.0V Power Supply (sequenced)



XMOS Power-On Reset



Title		
XMOS XSI-L1 Prototype With (Former National Semiconductor) Texas Instruments DP83848C Ethernet PHY		
Size	Number	Revision
A3		1.0
Date:	17-5-2012	Sheet 1 of 1
File:	C:\projects\eth a schDoe	Drawn By: Bianco Zandbergen

Bill of Materials

XMOS XS1-L1 DP83848C Ethernet PHY Prototype

Source Data From:

eth_a.SchDoc

Project:

eth_a.PrjPCB

Variant:

None

Creation Date:

17-5-2012 22:57:30

Print Date:

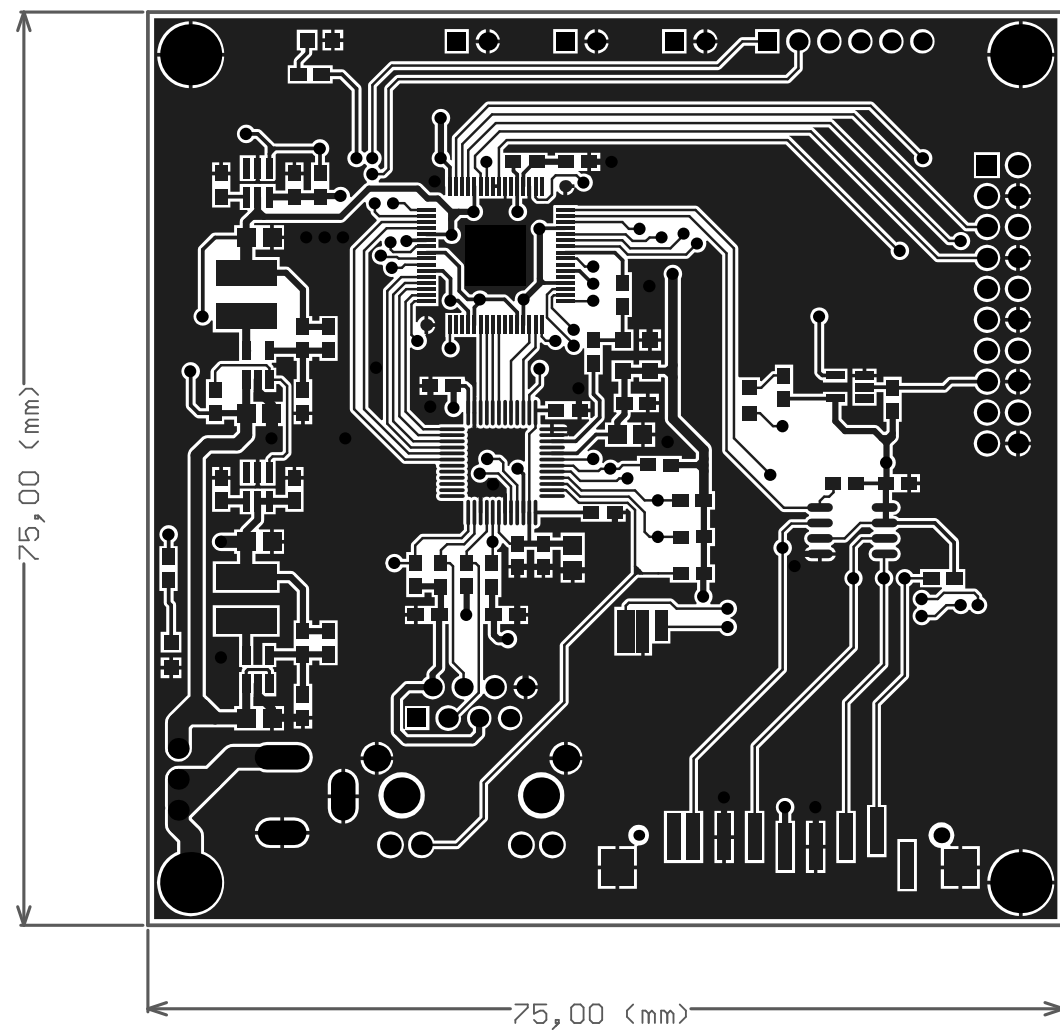
17-May-12 #####

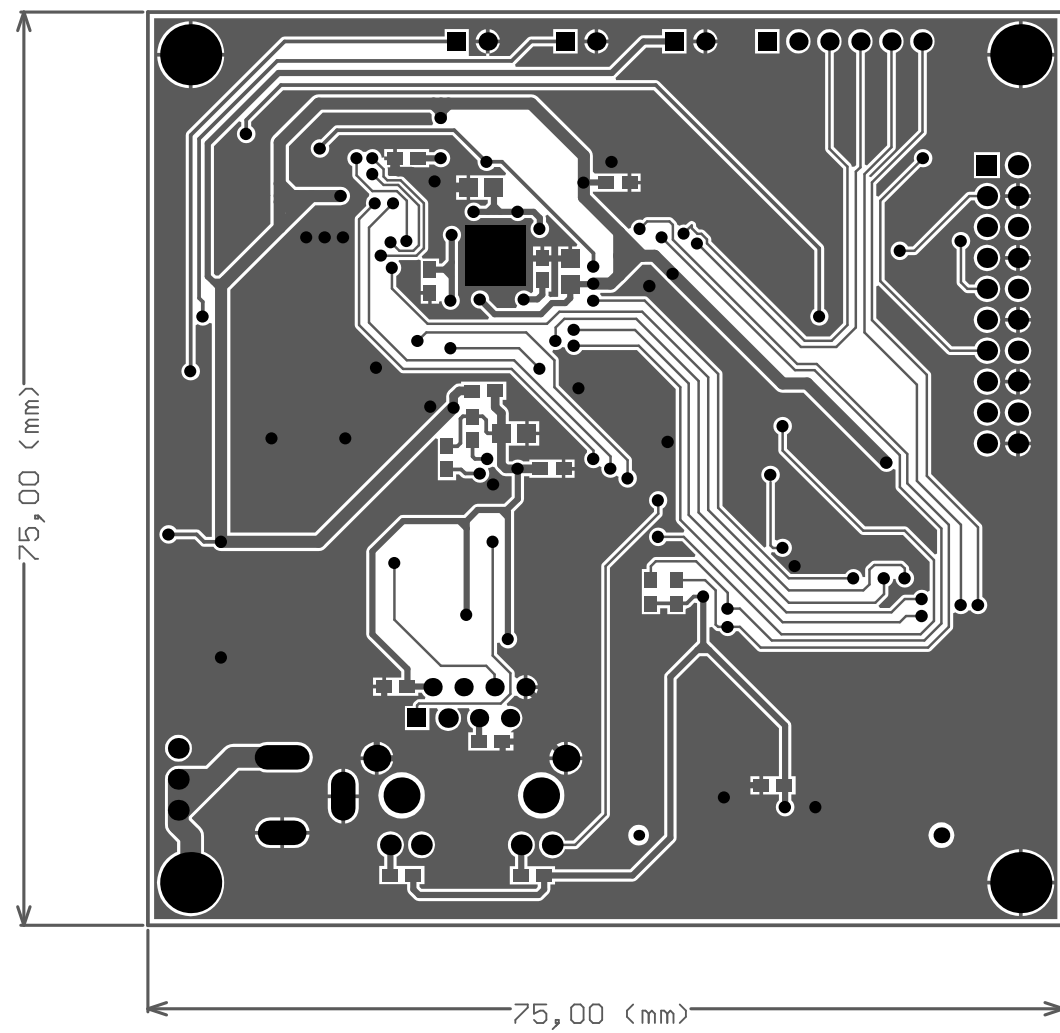
Description	Value	Quantity	Designator	Footprint	Manufacturer	ProductCode	Vendor	VendorCode	Price	Subtotal
4Mbit SPI Flash		1	U3	SOIC150-8_M	ATMEL	AT25DF041A-SSH-B	Famell	1715441	1,60	1,60
Buck Converter		2	U4, U5	SOT23-5	ON SEMICONDUCTOR	NCP1521BSNT1G	Famell	1432258	1,58	3,16
Buffer (open drain output)		1	U8	SOT23-5	TEXAS INSTRUMENTS	SN74LVC1G07DBV	Famell	1102969	0,47	0,47
Capacitor	100nF	18	C1, C2, C3, C5, C6, C8, C9, C11, C13, C14, C16, C17, C20, C21, C23, C30, C32, C34	1608[0603]_CAP	MURATA	GRM188R71H104KA93D	Famell	8820023	0,05	0,90
Capacitor	10uF	9	C7, C10, C12, C15, C19, C24, C26, C27, C29	2012[0805]_CAP	AVX	0805ZD106KAT2A	Famell	1833812	0,12	1,08
Capacitor	150pF	2	C31, C33	1608[0603]_CAP	MURATA	GRM1885C1H151JA01D	Famell	8819874	0,05	0,10
Capacitor	1uF	1	C4	1608[0603]_CAP	KEMET	C0603C105K4RACTU	Famell	1650837	0,17	0,17
Capacitor	33pF	2	C25, C28	1608[0603]_CAP	MURATA	GRM1885C1H330JA01D	Famell	1828910	0,03	0,06
Crystal Oscillator SMD 5mm x 3.2mm	25 MHz	1	Y1	OSC_32_50	TXC	7C-25.000MBB-T	Famell	1842032	3,21	3,21
Ferrite Bead	600Z	1	FB1	1608[0603]_FB	MURATA	BLM18AG601SN1D	Famell	1515679	0,06	0,06
Header, 2-Pin		3	P1, P2, P3	HDR1X2					0,00	0,00
Header, 6-Pin		1	P4	HDR1X6					0,00	0,00
Inductor	2u2H	1	L1	BOURNS_SRR4011	BOURNS	SRR4011-2R2YL	Famell	1828153	1,04	1,04
Inductor	3u3H	1	L2	BOURNS_SRR4011	BOURNS	SRR4011-3R3YL	Famell	1828154	0,27	0,27
Low Voltage Power Supply Connector		1	J3	KLD-0202	SWITCHCRAFT	RAPC722X	Famell	1608727	1,58	1,58
Power on Reset controller 0.9V		1	U6	SOT23-6	TEXAS INSTRUMENTS	TPS3808G09DBVT	Famell	1755527	2,45	2,45
Power on Reset controller 3.0V		1	U7	SOT23-6	TEXAS INSTRUMENTS	TPS3808G30DBVT	Famell	1755533	2,45	2,45
Resistor	100K	1	R21	1608[0603]_RES	VISHAY DRALORIC	CRCW0603100KFKEA	Famell	1469649	0,02	0,02
Resistor	110R	4	R2, R5, R8, R23	1608[0603]_RES	PANASONIC	ERJ3GEYJ111V	Famell	2059576	0,01	0,04
Resistor	18K	1	R22	1608[0603]_RES	VISHAY DRALORIC	CRCW060318K0FKEAHP	Famell	1738921	0,04	0,04
Resistor	1K5	1	R27	1608[0603]_RES	PANASONIC	ERJ3GEYJ152V	Famell	2059606	0,01	0,01
Resistor	2K2	5	R1, R4, R6, R28, R29	1608[0603]_RES	YAGEO	RE0603DR-072K2L	Famell	1840583	0,01	0,05
Resistor	470R	1	R16	1608[0603]_RES	BOURNS	CR0603-JW-471GLF	Famell	2008354	0,02	0,02
Resistor	47K	7	R15, R17, R18, R24, R25, R26, R30	1608[0603]_RES	VISHAY DRALORIC	CRCW060347K0FKEA	Famell	1469811	0,02	0,14
Resistor	49R9	6	R3, R9, R11, R12, R13, R14	1608[0603]_RES	SUSUMU	RR0816Q-49R9-D-68R	Famell	1612045	0,02	0,12
Resistor	4K87	1	R10	1608[0603]_RES	MULTICOMP	MC 0.063W 0603 1%	Famell	1170858	0,02	0,02
Resistor	4R7	1	R7	1608[0603]_RES	PANASONIC	ERJ3GEYJ4R7V	Famell	2059539	0,01	0,01
Resistor	68K	1	R19	1608[0603]_RES	PANASONIC	CRCW060368K0FKEA	Famell	1469832	0,02	0,02
Resistor	82K	1	R20	1608[0603]_RES	VISHAY DRALORIC	CRCW060382K0FKEAHP	Famell	1738930	0,04	0,04
Right Angle,RJ45-Keyed, Flange Mount PCB Jack		1	J1	Steward Con RJ45	STEWART CONNECTOR	SI-60062-F	Famell	1137983	5,21	5,21
Secure Digital Card Connector, Type A without Cover		1	J4	SDCARD-SDAMB-012	MULTICOMP	SDAMB-01215BT00	Famell	9186140	1,60	1,60
Single Port 10/100 Mb/s Ethernet PHY		1	U1	TSQFP50P900X900-48M	National Semiconductor	DP83848CVV	Famell	1286816	4,89	4,89
SMD LED 0805	GREEN	1	D3	2012[0805]_LED	KINGBRIGHT	KPHCM-2012SGC-T	Famell	1686074	0,16	0,16
SMD LED 0805	ORANGE	2	D1, D2	2012[0805]_LED	KINGBRIGHT	KPHCM-2012SECK	Famell	1686068	0,16	0,32
SPDT Switch		1	S1	SIP-3	EAO	09.03201.02	Famell	1608080	1,00	1,00
XMOS XS1-L1 Microprocessor		1	U2	XMOS_QFP50P1200X120	XMOS	XS1-L01A-LQ64-C5	Digikey	880-1032-ND	6,65	6,65
XTAG2 Connector		1	J2	0X160-65N						
				IDC2.54-V20D	TYCO	2-1634688-0	Famell	8395942	0,91	0,91

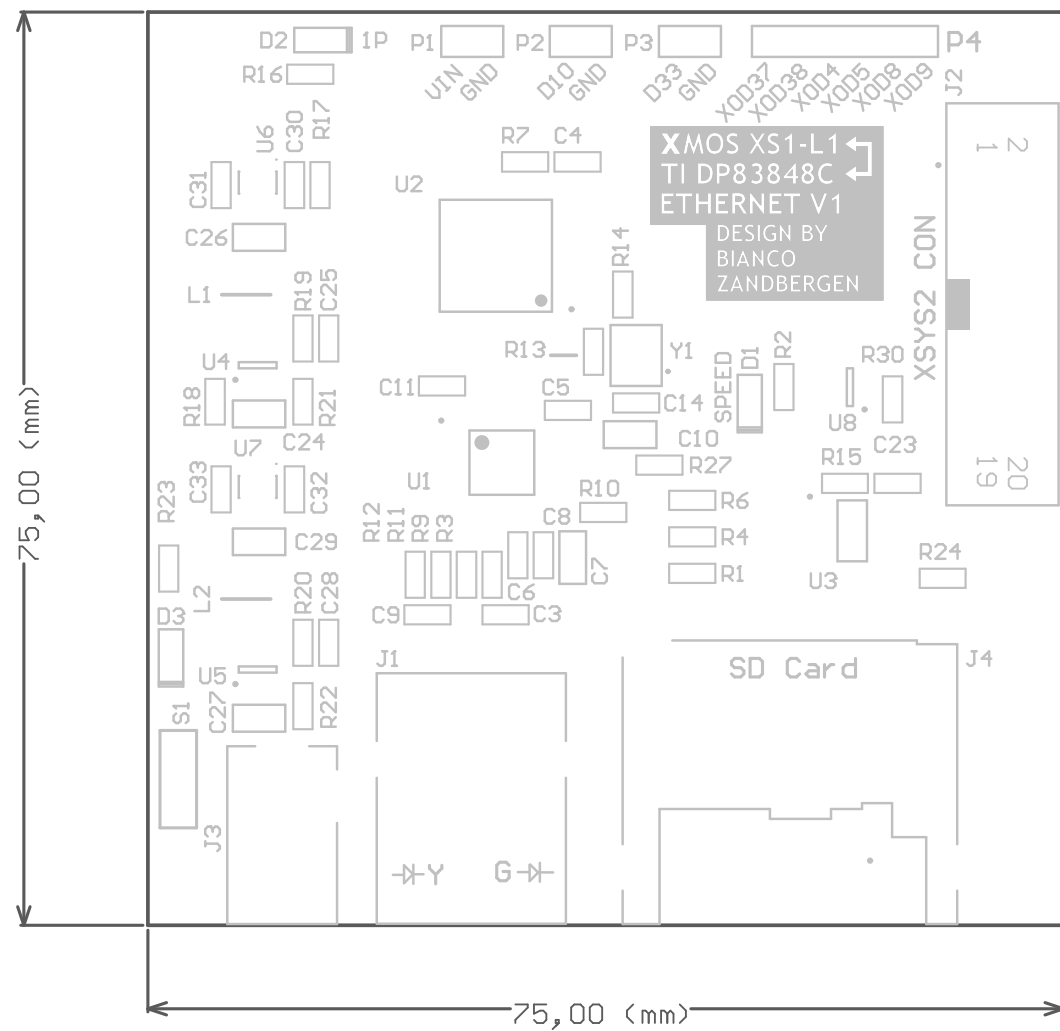
86

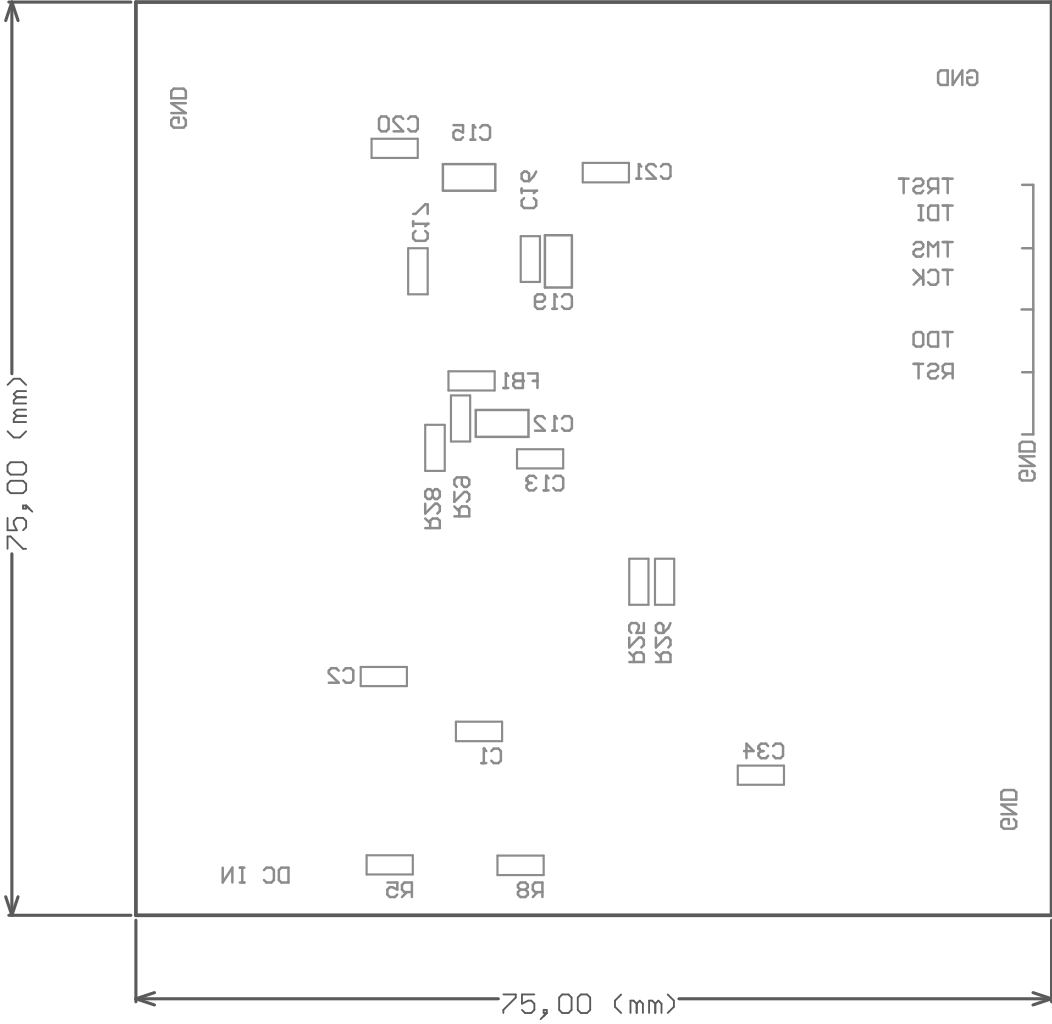
EUR

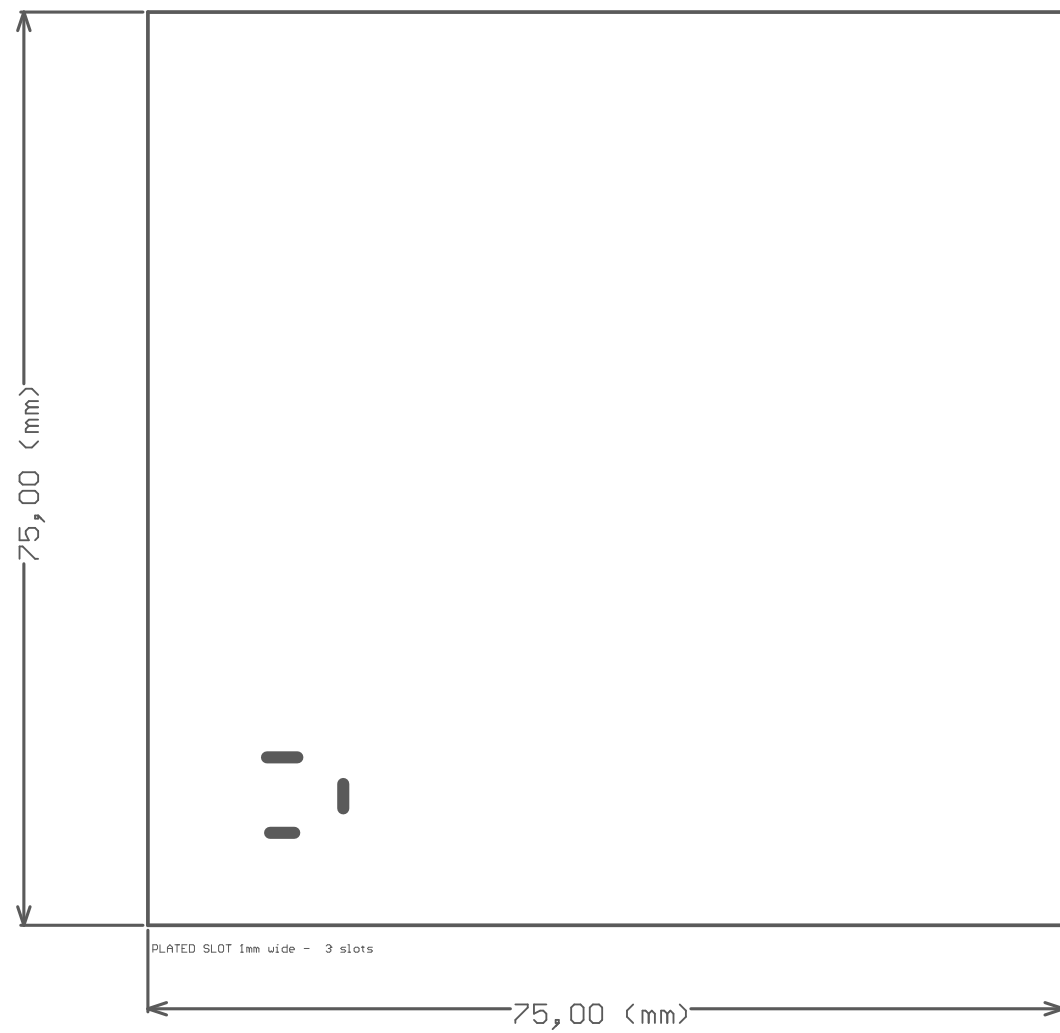
39,87

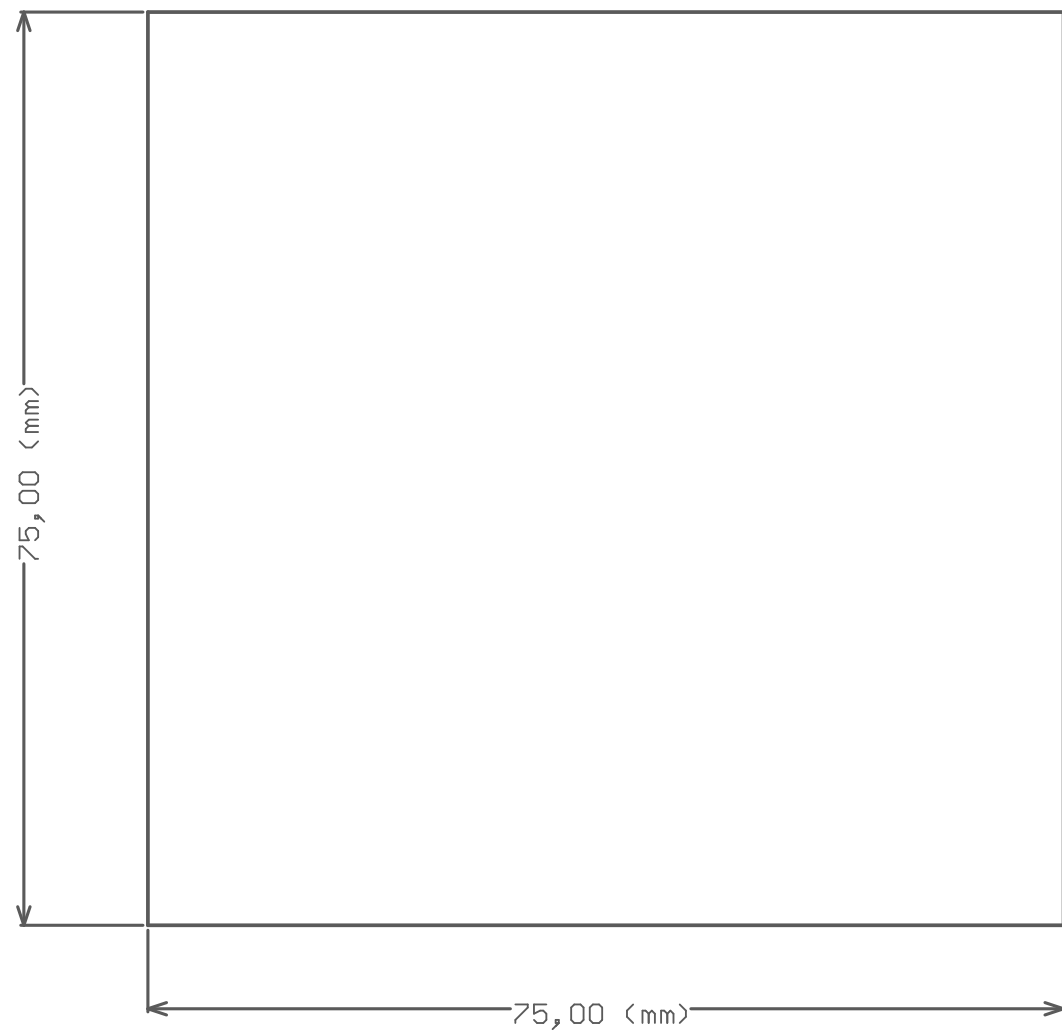


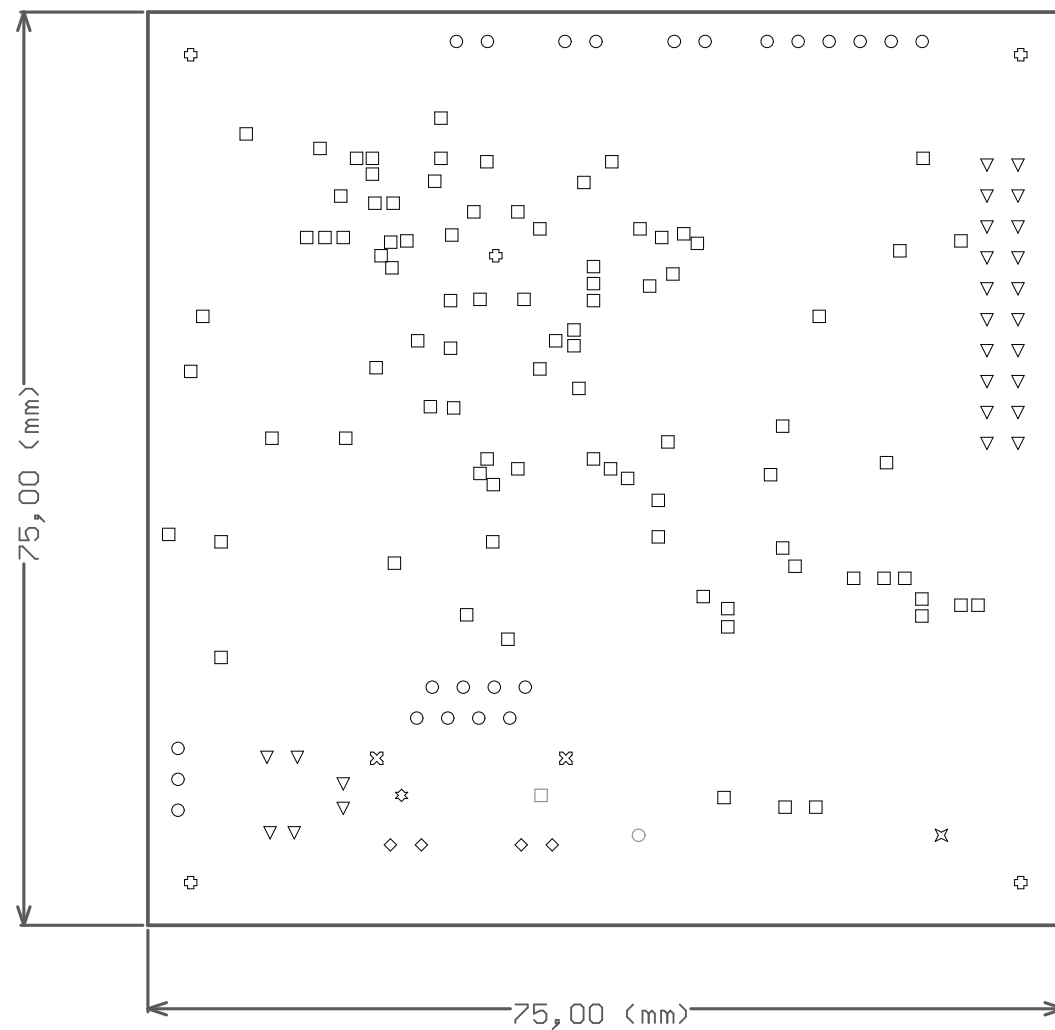












Symbol	Hit Count	Tool Size	Plated	Hole Type
□	90	0.5mm (19.685mil)	PTH	Round
○	23	0.9mm (35.433mil)	PTH	Round
▽	26	1mm (39.37mil)	PTH	Round
◇	4	1.1mm (43.307mil)	PTH	Round
○	1	1.2mm (47.244mil)	NPTH	Round
⊠	2	1.6mm (62.992mil)	PTH	Round
✕	1	1.6mm (62.992mil)	NPTH	Round
⊕	5	3mm (118.11mil)	PTH	Round
☆	1	3.3mm (129.921mil)	NPTH	Round
□	1	3.3mm (129.925mil)	NPTH	Round
	154 Total			

Drill Drawing.

